

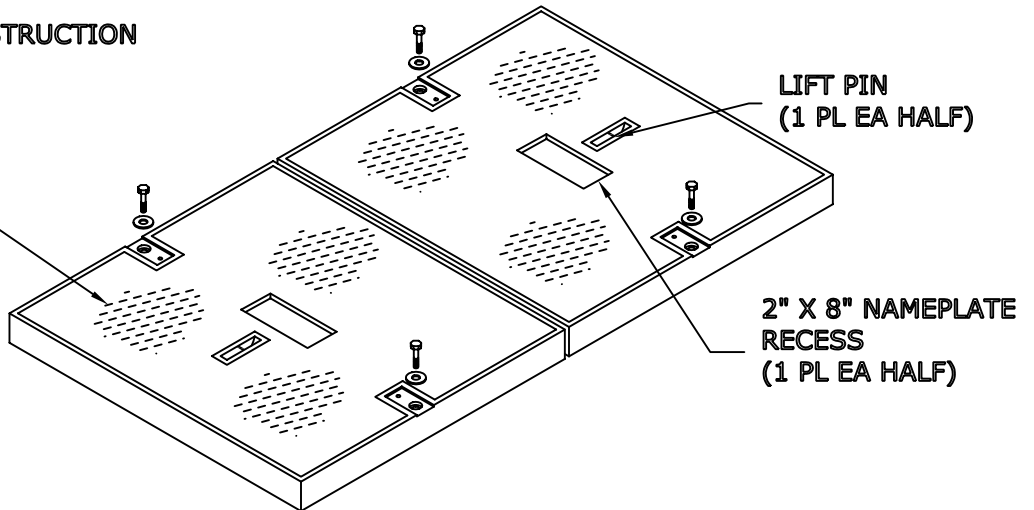
Date: 08/07/06  
Part #: FCA306036S

3060/36 FRP/PC  
ASSEMBLY

**COVER FEATURES:**

- \* STANDARD LOAD RATING: 20,800 LBS. WHEEL LOAD ON 10" X 20" PLATE
- \* POLYMER CONCRETE CONSTRUCTION
- \* 4 BOLT DOWN LOCATIONS
- \* COLOR = CONCRETE GREY
- \* NON-SKID SURFACE

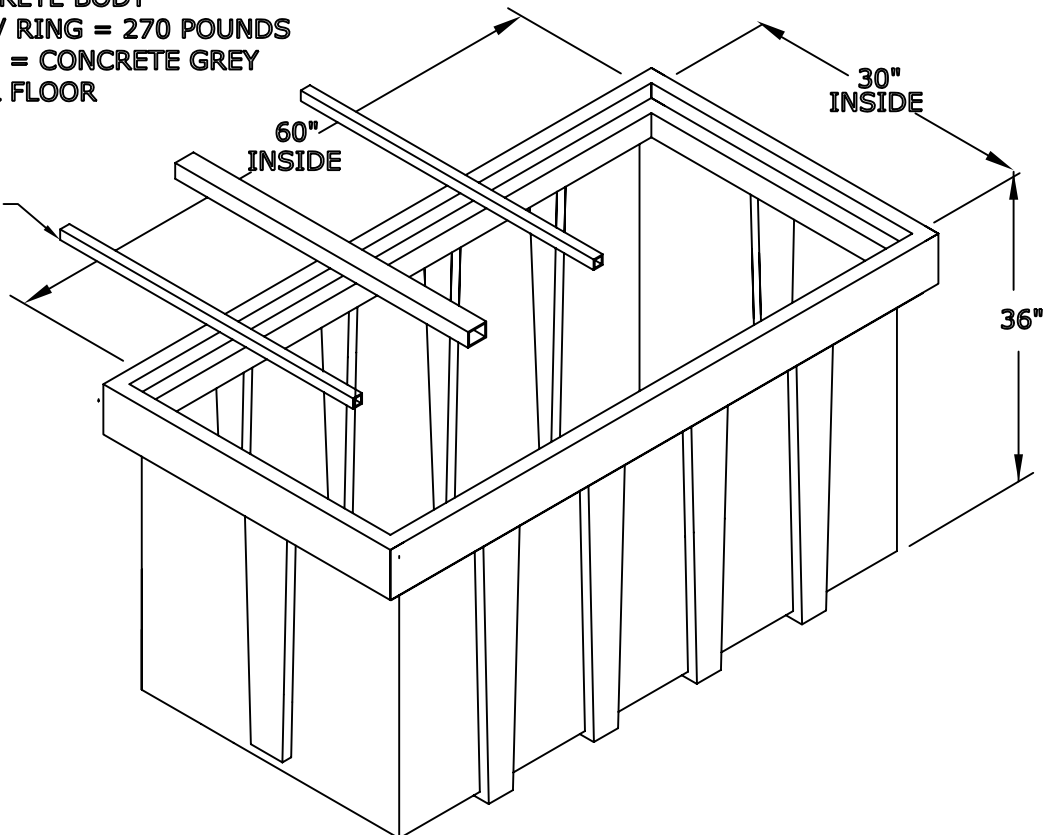
NON-SKID SURFACE  
(STANDARD)



**BOX FEATURES:**

- \* POLYMER CONCRETE RING
- \* FIBERGLASS REINFORCED POLYMER CONCRETE BODY
- \* BOX WEIGHT W/ RING = 270 POUNDS
- \* COLOR OF RING = CONCRETE GREY
- \* WITH INTEGRAL FLOOR

DROP IN BEAMS



APPROXIMATE COVER WEIGHT = 135 LBS EA 1/2  
APPROXIMATE TOTAL ASSEMBLY WEIGHT = 520 LBS

NewBasis  
2626 Kansas Ave.  
Riverside, CA 92507

Phone (951)787-0600  
Fax (951)787-0632  
www.newbasis.com

**newbasis**