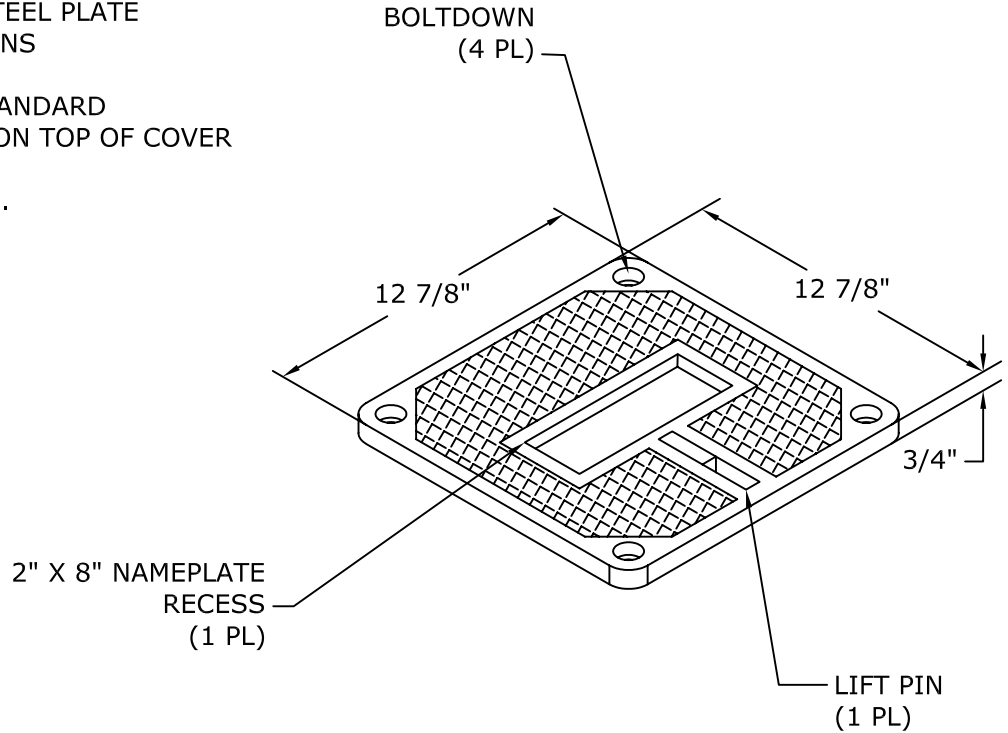


Date: 03/15/07  
Model #: PMA121212S

1212/12 SMC/  
POLYMER CONCRETE  
ASSEMBLY

**COVER FEATURES:**

- \* STANDARD LOAD RATING: 20,800 LBS. WHEEL LOAD ON A 10" X 20" STEEL PLATE
- \* 4 BOLT DOWN LOCATIONS
- \* SMC CONSTRUCTION
- \* NON-SKID SURFACE STANDARD
- \* 20K TO BE EMBOSSED ON TOP OF COVER
- \* GASKET LINING
- \* APPROX. WEIGHT 6 LBS.



**BOX FEATURES:**

- \* POLYMER CONCRETE CONSTRUCTION
- \* COLOR: CONCRETE GREY
- \* APPROX. WEIGHT 30 LBS.

